

Tile spacers

Data sheet

KALA®

*Ideas for
the roofs!*

Function:

Tile spacers for laying slabs on a bed of gravel or chips. The tile spacers are used to create permanent joints of the prescribed size.

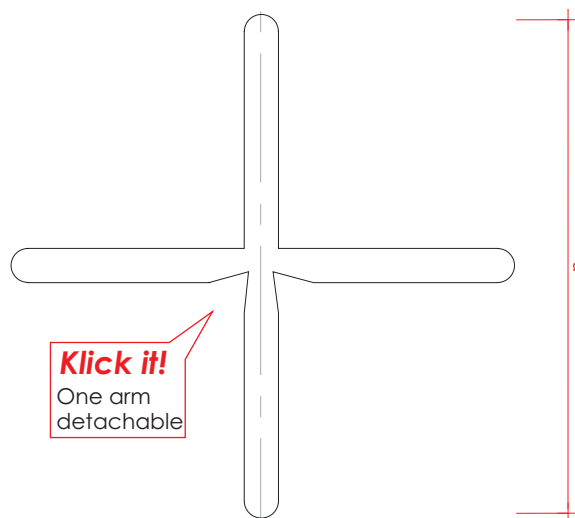
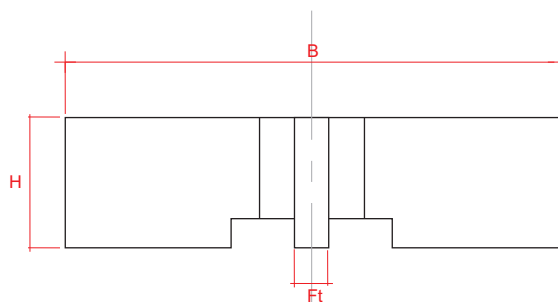
Options:

Joint width 3, 4, 5 and 10mm. Available as four-armed (one arm detachable) and three-armed option.

Standard colour black; for first-class patios we recommend our transparent tile spacers. Special colours on request.

Packing:

PE plastic bag



Custom-made products cannot be exchanged.

For further information please call your KALA technical advisor.

KALA, K.-H. Lange GmbH+Co.KG reserves the right to any change as may be technically or legally required without prior notice.

Last update: October 2009

Tile spacers

B	68	mm
H	18	
Ft	3,4,5,10	