

## Joint spacers – Height: 18 mm

### Function:

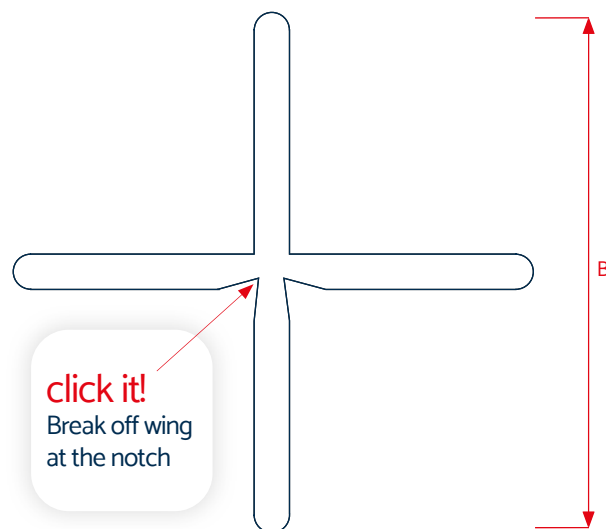
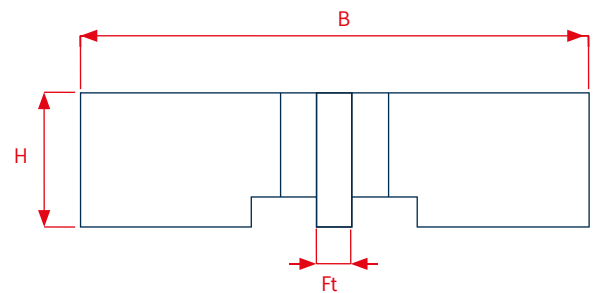
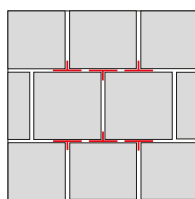
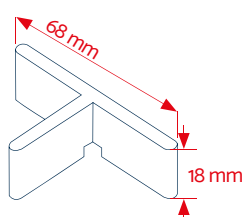
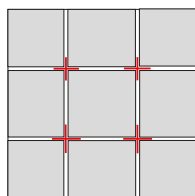
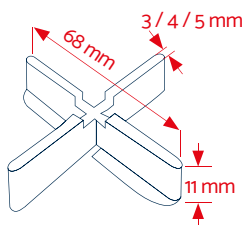
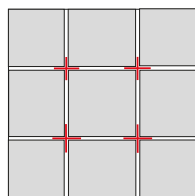
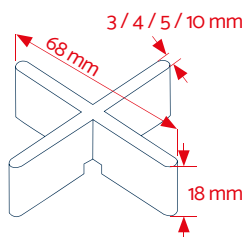
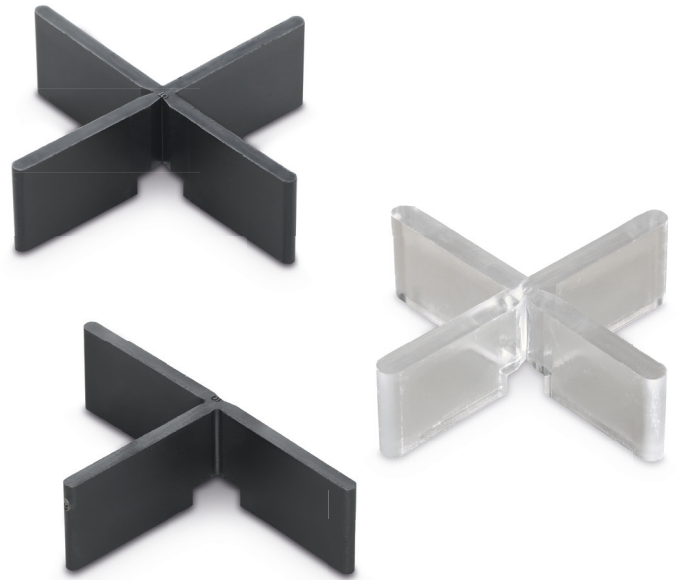
Ideal for laying paving slabs in gravel or grit beds. The joint spacers are used to create durable joints that comply with regulations. Thanks to the three-leg joint spacers, you can lay tiles cleanly in bond or right up to the edge.

### Variants:

- Joint spacer four-winged for joint widths 3, 4, 5 and 10 mm
- One wing is easy to break off at the notch
- Joint spacer three-winged (T-spacer) for joint widths 3 and 5 mm
- Standard colour Black
- A transparent version is also available for particularly high-quality terraces
- Special colours available on request

### Packaging units:

Delivery in box, PU 300 pieces



Technical data	
B	68 mm
H	18 mm
Ft	3 / 4 / 5 / 10 mm