

# Drain

**Attention:** The processing instructions of the roofing membrane manufacturers must be observed; Materials and material compounds used may be subject to changes

**Function:**

Moulded part for vertical drainage through the roof package. Can be installed with a connection to a pipe system for water drainage, or as an extension unit for a roof gully. Ensure appropriate backflow safety.

**Material:**

Variants PVC, FPO/PP<sup>2</sup> and BIT for connection to the respective matching material variant of the roofing membrane. The materials are modified to be weather-resistant: UV-stabilised, resistant to heat degradation and oxidative ageing as well as cold impact resistant.

**Available sizes:**

- D 50 mm (DN 50)
- D 75 mm (DN 70)
- D 90 mm
- D 95 mm
- D 110 mm (DN 100)
- D 125 mm (DN 125)
- D 160 mm (DN 150)

**Packaging units:**

Delivery in box, PU 1 piece

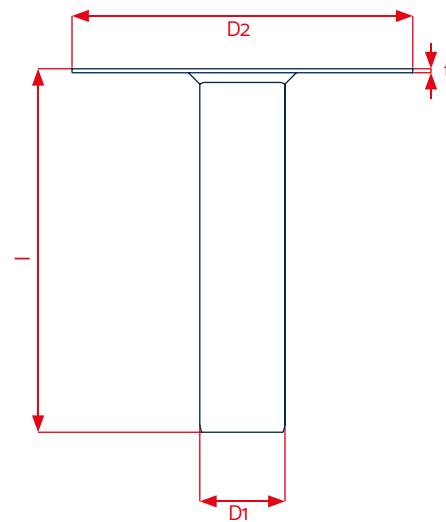
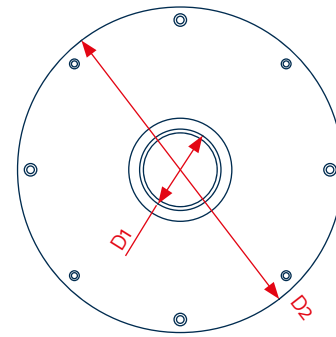
**Accessories<sup>4</sup>:**

- Gravel guard
- Lip seal

**Drainage capacity:**

LGA-certified performance data

Diameter	Attenuation depth	
	35 mm	65 mm
D 50 mm (DN 50)	3.70 l/s	n/a
D 75 mm (DN 70)	4.60 l/s	13.20 l/s
D 90 mm	5.30 l/s	14.60 l/s
D 110 mm (DN 100)	5.55 l/s	15.80 l/s
D 125 mm (DN 125)	5.55 l/s	16.00 l/s
D 160 mm (DN 150)	5.60 l/s	18.60 l/s



Technical data		
D1 (D Pipe)	50 / 75 mm	90 / 95 / 110 / 125 / 160 mm
D2 (D Plate)	300 mm	380 mm
l	320 mm <sup>1,3</sup>	320 mm <sup>1,3</sup>
t	3.5 mm	3.5 mm

<sup>1</sup>Special lengths available on request / <sup>2</sup>Also available in PE (roofing membranes based on PE) / <sup>3</sup>Further diameter sizes available on request / <sup>4</sup> Also available with accumulation ring. KALA – KUNSTSTOFFE | Karl-Heinz Lange GmbH+Co.KG reserves the right to make technical changes.