

# Refurbishment gully Nexo Fix

**Attention:** The processing instructions of the roofing membrane manufacturers must be observed; Materials and material compounds used may be subject to changes

**Function:**

The refurbishment gully, consisting of a base unit with a gravel guard and a lip seal, is the ideal solution for old gullies in roof packages that require refurbishment. The vertical pipe with the attached lip seal is inserted into the existing gully. The refurbishment gully's tray offers a secure connection for the waterproofing membrane.

**Material:**

Variants: PVC, FPO/PP and BIT for connection to the respective matching material variant of the roofing membrane. The base unit material is modified to be weather-resistant. UV-stabilised, resistant to heat degradation and oxidative ageing as well as cold impact resistant.

**Available sizes:**

- D 50 mm (DN 50)
- D 95 mm
- D 125 mm (DN 125)
- D 75 mm (DN 70)
- D 110 mm (DN 100)
- D 160 mm (DN 150)

**Packaging units:**

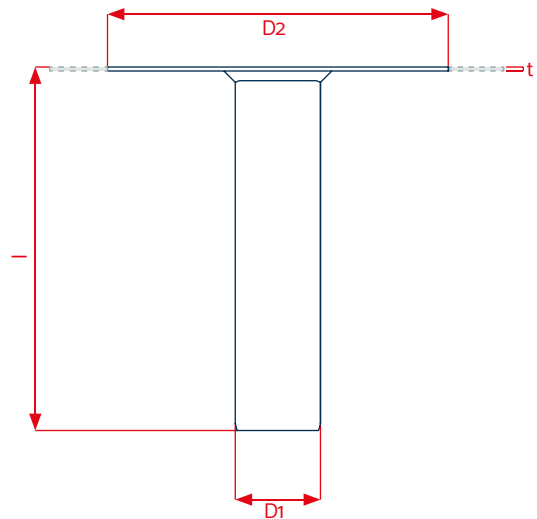
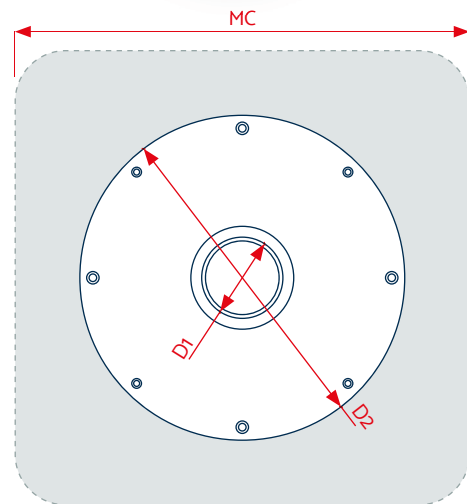
Delivery in box, PU 1 piece

**Drainage capacity:**

LGA-certified performance data

Diameter	Attenuation depth	
	35 mm	65 mm
D 50 mm (DN 50)	3.70 l/s	n/a
D 75 mm (DN 70)	4.60 l/s	13.20 l/s
D 110 mm (DN 100)	5.55 l/s	15.80 l/s
D 125 mm (DN 125)	5.55 l/s	16.00 l/s
D 160 mm (DN 150)	5.60 l/s	18.60 l/s

Lip seals	
Diameter	Backflow-proof area
ø 50 mm (DN 50)	61 to 77 mm
ø 75 mm (DN 70)	97 to 108 mm
ø 95 mm	100 to 130 mm
ø 110 mm (DN 100)	120 to 135 mm
ø 125 mm (DN 125)	152 to 160 mm
ø 160 mm (DN 150)	150 to 180 mm



Technical data		
D1 (D Pipe)	50 / 75 mm	95 / 110 / 125 / 160 mm
D2 (D Plate)	300 mm	380 mm
l	320 / 600 mm	320 / 600 mm
t	3.5 mm	3.5 mm
Membrane connection (MC)	L 500 x B 500 mm	L 580 x B 580 mm

KALA - KUNSTSTOFFE | Karl-Heinz Lange GmbH+Co.KG reserves the right to make technical changes.