

# Scupper BIT XL

With **XL bitumen sleeve** – for effortless connection to the roofing membrane!

**Attention:** The processing instructions of the roofing membrane manufacturers must be observed; Materials and material compounds used may be subject to changes

**Function:**

Moulded part with a laminated bitumen connection sleeve for horizontal drainage through the parapet. Its large dimensions (470 x 500 mm) ensure an even more secure connection in all installation scenarios. Can be installed with a connection to a pipe system for water drainage or free discharge. When installing for emergency drainage, the exact installation point must be chosen depending on the water height.

**Material:**

FPO/PP modified with firmly laminated bitumen connection sleeve. The material is modified to be weather-resistant: UV-stabilised, resistant to heat degradation and oxidative ageing as well as cold impact resistant.

**Available sizes:**

- D 50 mm (DN 50)
- D 63 mm
- D 75 mm (DN 70)
- D 90 mm
- D 110 mm (DN 100)
- D 125 mm (DN 125)

**Packaging units:**

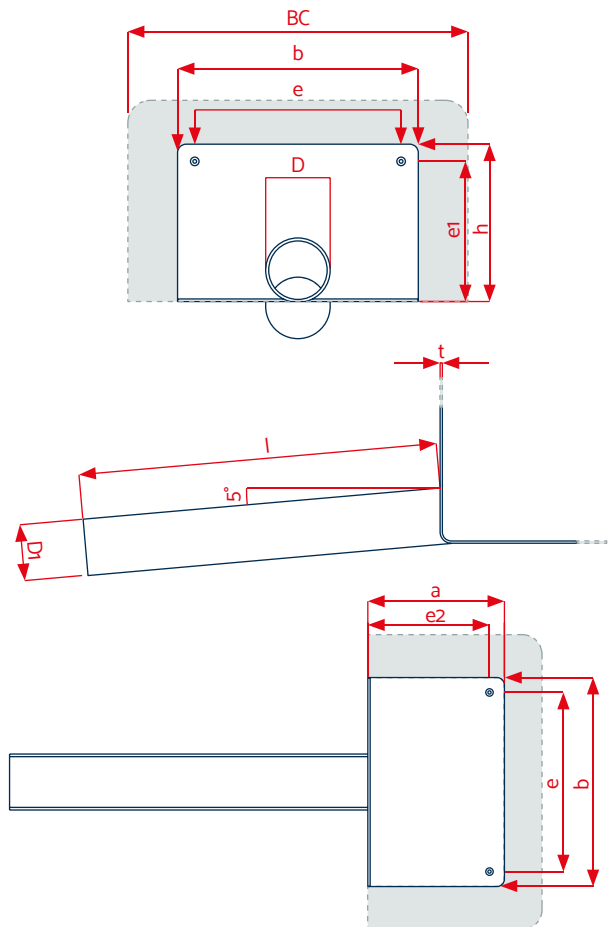
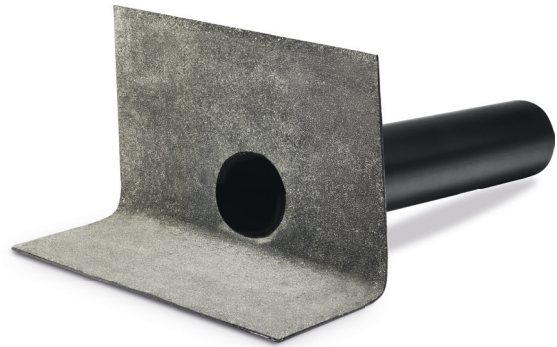
Delivery in box, PU 1 piece

**Accessories<sup>2</sup>:**

- Gravel guard
- Vapour barrier sheet

**Drainage capacity:**

LGA-certified performance data



Diameter	Attenuation depth	
	35 mm	65 mm
D 50 mm (DN 50)	0.51 l/s	1.31 l/s
D 75 mm (DN 70)	0.65 l/s	1.65 l/s
D 90 mm	0.65 l/s	1.90 l/s
D 110 mm (DN 100)	1.00 l/s	2.65 l/s
D 125 mm (DN 125)	1.00 l/s	2.80 l/s

Technical data			
D	50 / 63 / 75 / 90 / 110 / 125 mm		
l	480 mm <sup>1</sup>	h	186 mm
a	112 mm	e	240 mm
b	280 mm	e1	166 mm
Bitumen connection (BC)	L 470 x B 500 mm	e2	92 mm
		t	3 mm
Pipe inclination 5°			

<sup>1</sup>Special lengths available on request / <sup>2</sup> Also available with accumulation ring. KALA - KUNSTSTOFFE I Karl-Heinz Lange GmbH+Co.KG reserves the right to make technical changes.