

Universal grommet XL

Attention: The processing instructions of the roofing membrane manufacturers must be observed; Materials and material compounds used may be subject to changes

Function:

Feed-through element for the safe and professional routing of pipes, cables and supply lines through the roof package. Suitable for use in solar thermal and photovoltaic systems, as well as in lightning and fall protection systems.

Installation:

Align the universal grommet with the substrate and secure it in position at four points using the holes provided on the edge of the tray. If necessary, feed pipes and cables through before installation. According to the processing specifications from the roofing membrane manufacturer, weld the connection sleeve all around, bonding it to the waterproofing membrane. Position the heat-shrinkable hose in such a way that one half is on the universal grommet and the other is on the pipe or cable. Then, slowly and evenly heat with a hot air hand dryer until the hose is fully shrunk onto the universal grommet and pipe or cable around the entire circumference.

Material:

Available in BIT, PVC and FPO/PP variants, which are made of hard plastic with a factory-welded foil or bitumen sleeve for a simple and secure connection to the respective roofing membrane. The base unit is modified to be weather-resistant and offers the following properties: UV-stabilised and resistant to thermal degradation, oxidative ageing, and cold impact, making it ideal for use in challenging climatic conditions.

Available sizes^{1,2}:

- D 68 mm • D 115 mm
- D 100 mm • D 150 mm

Delivery generally includes heat-shrinkable hose.

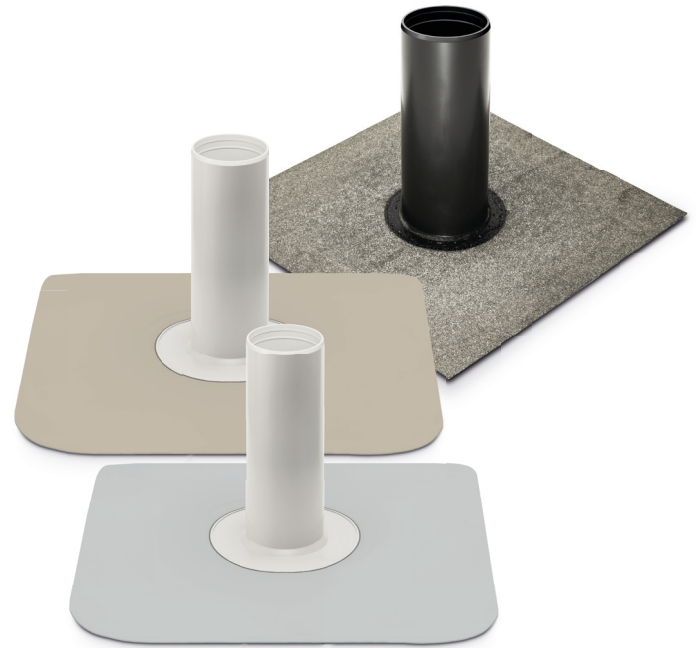
With circumferential cutting markings and height indications.

Packaging units:

- D 68 mm - D 150 mm in box, PU 5 pieces

Accessories:

- Hose clamp



Technical data D 68 - D 150		
Height	320 mm	
Inner diameter	D 68 mm D 100 mm D 115 mm D 150 mm	
Material thickness moulded part	3.5 mm	
Connection sleeve BIT	470 x 500 mm	
Membrane connection	D 68 mm: 500 x 500 mm	D 100 - 150 mm: 580 x 580 mm
Material thickness bitumen connection sleeve	4 mm	

¹Also available in a custom-made slate-coated version / ²Also available in PE (roofing membranes based on PE)
KALA - KUNSTSTOFFE | Karl-Heinz Lange GmbH+Co.KG reserves the right to make technical changes.