

# Drain

## Data sheet

# KALA®

Progress  
Through Skills

### Function:

Vertical drainage through the roofing unit. Connection to a pipe system for water drainage or installation on a roof gully as an add-on element. Depending on the installation, back pressure must be taken into account.

### Type of connection:

welding; direct connection to the roof sheeting: PVC, PP, PE, BIT (with a laminated bitumen sleeve).

### Options:

All four material types can be supplied in the diameter sizes:

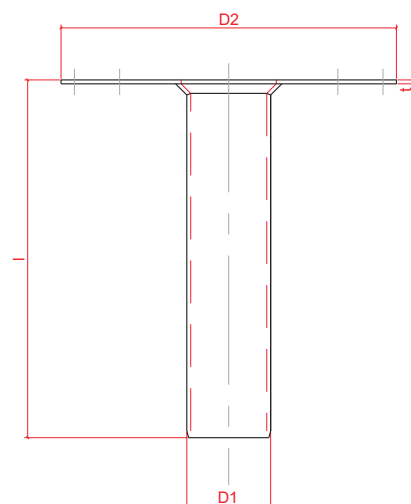
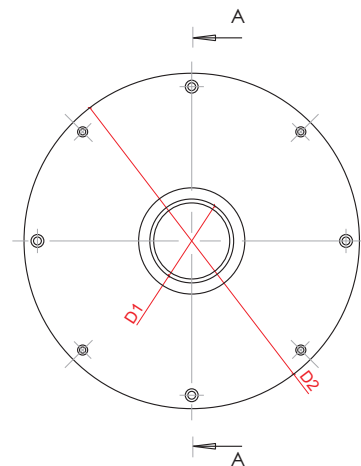
D50/DN50	D95
D63	D110/DN100
D75/DN70	D125/DN125
D90/DN80	D160/DN150

### Packing:

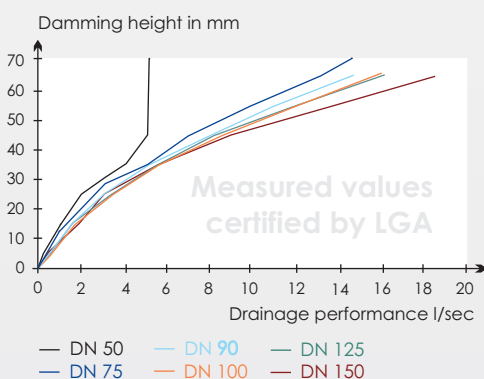
packed in box;  
packing unit = 1 piece

### Accessories:

Universal drainage strainer  
Lip-seal  
Rolling ring\*



### Drainage performance in l/sec



\*Attention: assembly with rolling ring does not comply with the standards. Backwater security is not always guaranteed.

The installation specifications of the roof sheeting manufacturers must be adhered to; the materials and material compounds used are subject to change; where necessary, further tests are to be carried out.

Custom-made products cannot be exchanged.

For further information please call your KALA technical advisor.

KALA, K.-H. Lange GmbH+Co. KG reserves the right to any change as may be technically or legally required without prior notice.

Last update: February 2018

### Drain

D1	50/56/63/75	90/95/110/125/140/160	mm
D2	300	380	
l	320	320	
t	3.5	3.5	