

Emergency Overflow rectangular

Data sheet

KALA®

Progress
Through Skills

Function:

Horizontal water drainage of the flat roof towards the outside, with a further connection to the pipe system or free-flow drainage. This element is used for emergency drainage; installation must be coordinated with the drainage system to avoid critical water levels on the roof. The exact installation points and heights determined by the planner must be complied with to ensure proper function.

Type of connection:

PVC, PP, PE: welding, direct connection to the roof sheeting.

BIT (with primer; roughened): welding with offset.

Options:

The various material types can be supplied in the WxH cross-sections: 120x60, 180x80, 300x80, 300x100, 500x100, 600x100, 750x100 and 1.000x100 mm. The pipe sections are either 300 or 600 mm long and the pipe incline is always 5°. Custom-made products (special layouts, pipe inclines, crosssections, channel lengths, HT connections, etc.) can be provided on request.

Packing:

packed in box; packing unit = 1 piece

Drainage performance in l/sec

Dimensions	Damming height	
	35mm	75 mm
120x60	1,30	4,50
180x80	1,90	6,00
300x80/100	3,00	9,60
500x100	5,50	16,50
600x100	7,20	21,90
750x100	7,50	24,00
1.000x100	12,60	34,60

Measured values certified by LGA

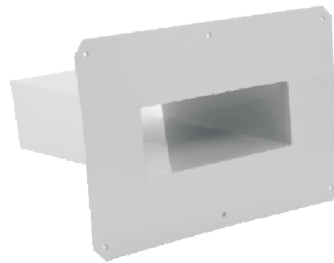
The installation specifications of the roof sheeting manufacturers must be adhered to; the materials and material compounds used are subject to change; where necessary, further tests are to be carried out.

Custom-made products cannot be exchanged.

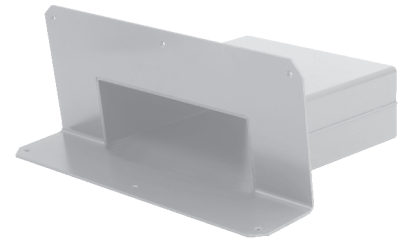
For further information please call your KALA technical advisor.

KALA, K.-H. Lange GmbH+Co. KG reserves the right to any change as may be technically or legally required without prior notice.

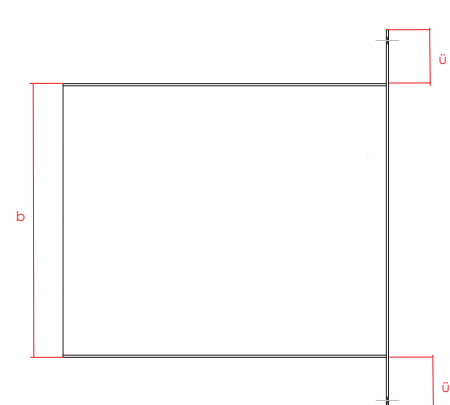
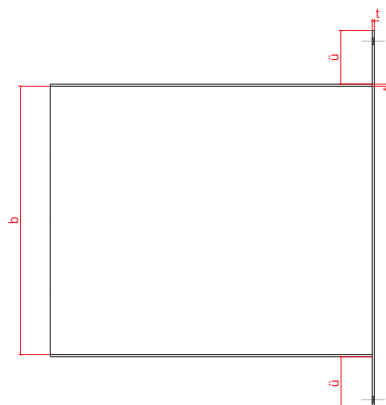
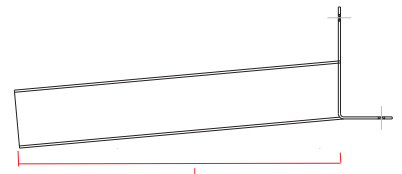
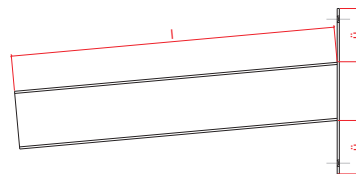
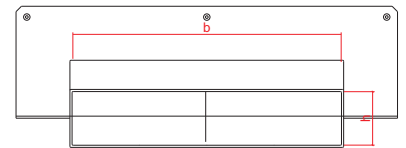
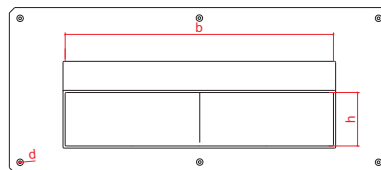
Last update: February 2018



Option 1: An emergency overflow with a straight tray - a flexible solution, with the height determined by you.



Option 2: A water spout with a perpendicularly bent tray without a cross-sill ensures maximum water drainage without backing up. For direct installation without damming height.



Emergency overflow		
l	300	600
h	60, 80, 100	
b	120, 180, 300, 500, 600, 750, 1000	
t	4	
d	5	
ü	100	
Pipe incline 5°		