

Support system underlayable

Data sheet

KALA®

Progress
Through Skills

Function:

Support for the installation of all types of coverings, especially stone slabs and wooden structures. Height adjustment using compensating rings makes it easy to level out any unevenness in the foundations and any slopes. The KALA support element and the pressure disc, which can be supplied as an accessory, form a sliding bearing system. This support can be installed directly on the damp-proofing membrane. Protective mats are not required in areas subject to normal wear and tear (additional protective mats must be fitted in areas frequented by the public, such as entrances to public buildings, cafeterias, etc.).

Options:

Joint divider widths 3 mm and 4 mm, removable joint divider wings

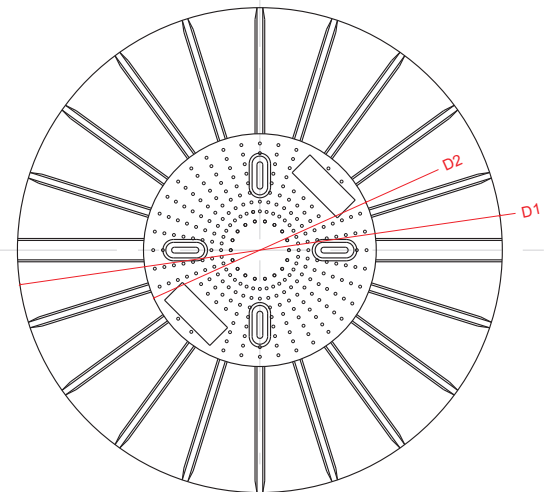
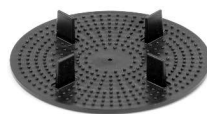
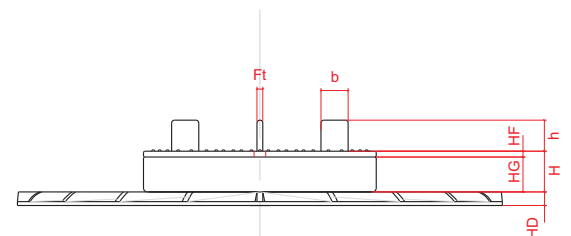
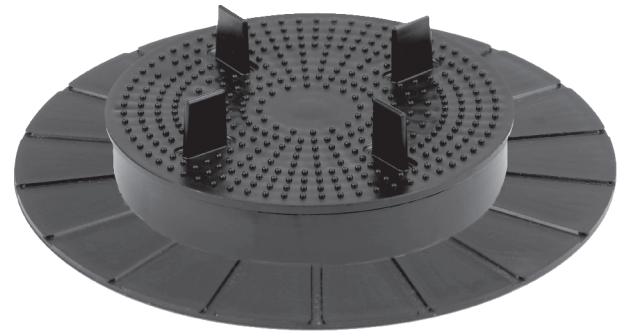
KALA wood: a level surface without wings fitted under wooden components

Packing:

Carton packaging

Accessories:

Pressure disks D200, D250



Support system underlayable with pressure disk

D1	250	mm
D2	120	
H	21	
HG	18	
HF	3	
HD	7	
h	16	
b	14	
Ft	3 or 4	

Available equalizer elements:
Equalizer disk H=3mm, equalizer ring H=6mm

For further information please call your KALA technical advisor.

KALA, K.-H. Lange GmbH+Co. KG reserves the right to any change as may be technically or legally required without prior notice.

Last update: February 2018

KALA - KUNSTSTOFFE
K.-H. Lange GmbH + Co. KG

Am Römerhof 19
D - 78727 Oberndorf

Phone +49 7423 8687-0
Fax +49 7423 8687-88

info@kala.de
www.kala.de