

Scupper, rectangular

Function:

Moulded part for horizontal drainage or emergency drainage through the parapet wall. When installing the emergency overflow, the precise installation point depends on the water level.

Material:

PVC and FPO/PP² models for connection to the respective matching roofing membrane material type. Perform connection for bituminous waterproofing using liquid plastic. The materials are modified to be weather-resistant: UV-stabilised, against heat degradation and oxidative ageing as well as resistant to cold impact.

Available sizes (B x H):

• 120 x 60 mm • 300 x 80 mm • 500 x 100 mm • 750 x 100 mm
• 180 x 80 mm • 300 x 100 mm • 600 x 100 mm • 1000 x 100 mm

Lengths Available¹(L):

• 300 mm • 600 mm

Colours:

• PVC Telegrey 4, similar to RAL 7047
• FPO/PP Silk grey, similar to RAL 7044

Package units:

Supplied in cartons, PU 1 unit

Accessories:

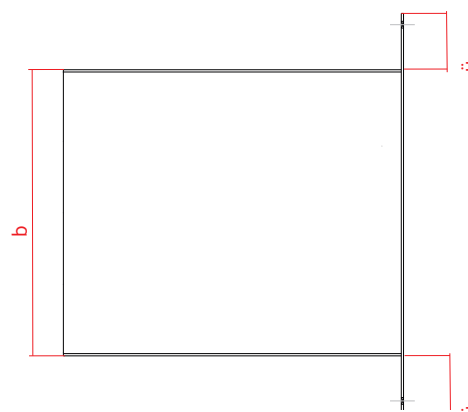
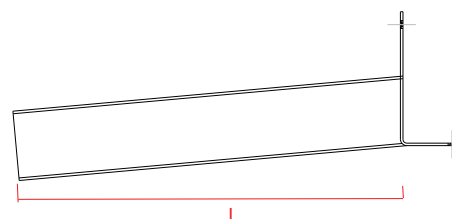
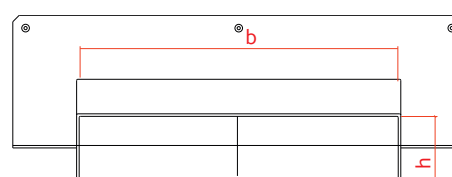
Vapour barrier sheet for scuppers and emergency overflows

Drainage performance litre/sec.:

LGA-certified characteristics



Our spout with a curved right-angled tray and no sill guarantees optimum backflow-free water drainage. For direct installation without ponding height³.



Technical data ⁴		
Duct = W x H ¹	Accumulation height	
	35 mm	65 mm
120 x 60	1.30	3.50
180 x 80	1.90	5.00
300 x 80	3.00	7.80
300 x 100	3.00	7.80
500 x 100	5.50	13.40
600 x 100	7.20	N/A
750 x 100	7.50	19.20
1000 x 100	12.60	29.40

Technical data ⁴			mm
l	300 ¹	600 ¹	
h	60 / 80 / 100		
b	120 / 180 / 300 / 500 / 600 / 750 / 1.000		
t	4 (up to 299 mm width) / 5 (300 mm width and above)		
d	5		
ü	100		
Pipe inclination 5° in each case			

¹Special sizes available on request / ²Also available in PE (PE-based roof membranes) and BIT (sealed with liquid plastic) / ³Also available with matching retaining ring (not discountable) /

⁴Custom designs are non-returnable. The processing instructions of the roof sheeting manufacturer must be observed; Materials and material compounds used may be subject to change. KALA - KUNSTSTOFFE I Karl-Heinz Lange GmbH+Co.KG reserves the right to make technical changes.