

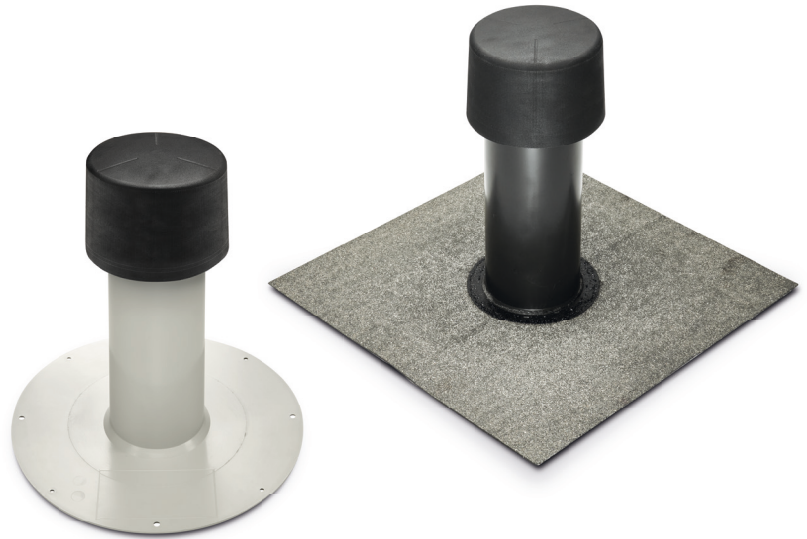
# Flat roof fans for cold roofs with weather cap

## Function:

- Ventilation and aeration of flat roof structures
- For a drenched roof package for moisture removal and drying out

## Installation<sup>3</sup>:

Align the fan on the underlay and secure it in position at four points on the underlay using the holes drilled into the edge of the tray. Place the membrane on the tray and join the membrane and the tray with a weld seam at least 20 mm wide. For the BIT option, incorporate the factory-laminated bitumen connection into the multi-layer waterproofing composite in a workmanlike manner.



## Material:

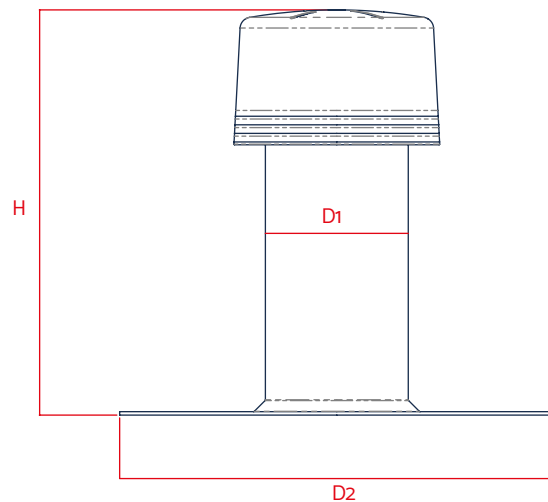
Our fans are available in PVC, FPO/PP<sup>2</sup> and BIT for connection to the matching material used for the roof membrane. The materials are modified to be weather-resistant: UV-stabilised, against heat degradation and oxidative ageing as well as resistant to cold impact.

## Available sizes<sup>1</sup>:

- D 75 mm (DN 70)
- D 125 mm (DN 125)
- D 110 mm (DN 100)
- D 160 mm (DN 150)

## Package units:

Supplied in cartons, PU 1 unit



Technical data	
H	354 mm <sup>1</sup>
D1	D 75 mm (DN 70) / D 110 mm (DN 100) / D 125 mm (DN 125) / D 160 mm (DN 150)
D2	For size DN 70 = 300 mm For all others = 380 mm

<sup>1</sup>Special lengths available on request / <sup>2</sup>also available in PE (roofing membranes based on PE) / <sup>3</sup>**Attention:** The processing instructions of the roofing membrane manufacturer must be adhered to; Materials and used material compounds may be subject to change. KALA - KUNSTSTOFFE | Karl-Heinz Lange GmbH+Co.KG reserves the right to make technical changes.