

Renovation drain

Attention: The processing instructions of the roofing membrane manufacturer must be adhered to;
Materials and used material compounds may be subject to change.

Function:

The renovation drain, consisting of a base body with a gravel basket and lip seal, is the solution for aging roof drains in need of renovation. The vertical pipe with the attached lip seal is inserted into the existing old drain. The flange of the renovation drain provides a secure connection for the waterproofing membrane.

Material:

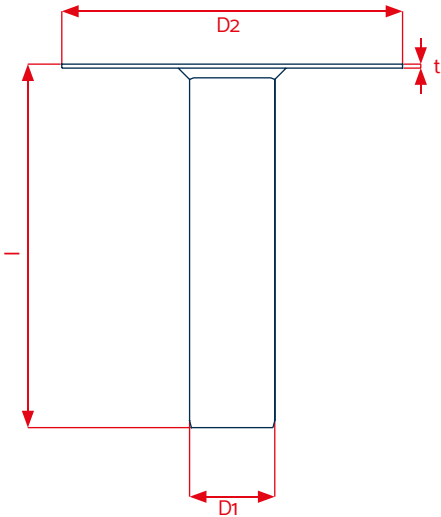
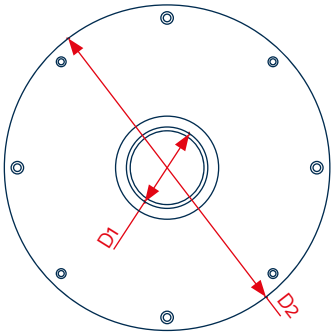
Variants in PVC, FPO/PP¹, and BIT for connection to the corresponding compatible material type of the roof membrane. The materials are modified to be weather-resistant: UV-stabilised, against heat degradation and oxidative ageing as well as resistant to cold impact. Alternatively, available with a welded connection sleeve from the Nexo Fix product line for easy attachment to the appropriate roof membrane.

Available sizes ³:

- D 50 mm (DN 50)
- D 95 mm
- D 125 mm (DN 125)
- D 75 mm (DN 70)
- D 110 mm (DN 100)
- D 160 mm (DN 150)

Package units:

Supplied in cartons, PU 1 unit



Drainage performance:

LGA-certified characteristics

Diameter	Accumulation height	
	35 mm	65 mm
D 50 mm (DN 50)	3.70 litre/sec.	N/A
D 75 mm (DN 70)	4.60 litre/sec.	13.20 litre/sec.
D 110 mm (DN 100)	5.55 litre/sec.	15.80 litre/sec.
D 125 mm (DN 125)	5.55 litre/sec.	16.00 litre/sec.
D 160 mm (DN 150)	5.60 litre/sec.	18.60 litre/sec.

Technical data		
D1	50 / 75 mm	95 / 110 / 125 / 160 mm
D2	300 mm	380 mm
l	320 mm ¹	320 mm ¹
t	3.5 mm	3.5 mm
Foil connection (FC)	D 50 mm (DN 50) to D 75 mm (DN 70)	L 500 x W 500 mm
Foil connection (FC)	D 90 mm to D 160 mm (DN 150)	L 580 x W 580 mm

¹ Alternatively available in PE (roof membranes based on PE)
KALA – KUNSTSTOFFE | Karl-Heinz Lange GmbH+Co.KG reserves the right to make technical changes.