

# Drain

**Attention:** The processing instructions of the roofing membrane manufacturer must be adhered to; Materials and used material compounds may be subject to change.

**Function:**

Molded part for vertical drainage through the roof assembly. Installation with connection to a piping system for water discharge or as an extension element for a roof drain. Ensure adequate backflow protection.

**Material:**

Our drains are available in PVC, FPO/PP <sup>2</sup> and BIT for connection to the matching material used for the roof membrane. The materials are modified to be weather-resistant: UV-stabilised, against heat degradation and oxidative ageing as well as resistant to cold impact.

**Available sizes <sup>3</sup>:**

- D 50 mm (DN 50)

• D 75 mm (DN 70)

• D 90 mm
- D 95 mm

• D 110 mm (DN 100)

• D 125 mm (DN 125)
- D 160 mm (DN 150)

**Package units:**

Supplied in cartons, PU 1 unit

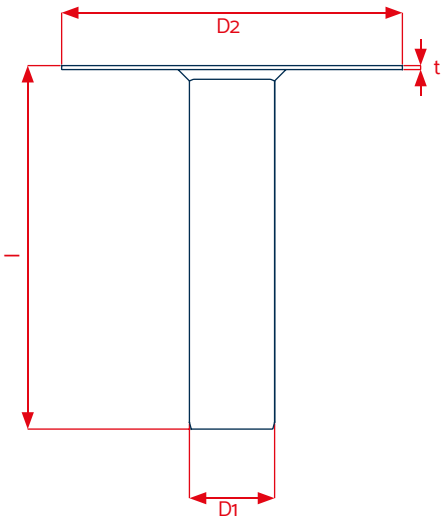
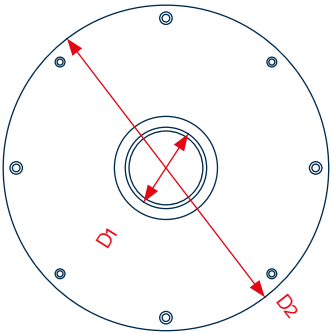
**Accessories<sup>4</sup>:**

- Gravel basket
- Lip seal

**Drainage performance:**

LGA-certified characteristics

Diameter	Accumulation height	
	35 mm	65 mm
D 50 mm (DN 50)	3.70 litre/sec.	N/A
D 75 mm (DN 70)	4.60 litre/sec.	13.20 litre/sec.
D 90 mm	5.30 litre/sec.	14.60 litre/sec.
D 110 mm (DN 100)	5.55 litre/sec.	15.80 litre/sec.
D 125 mm (DN 125)	5.55 litre/sec.	16.00 litre/sec.
D 160 mm (DN 150)	5.60 litre/sec.	18.60 litre/sec.



Technical data		
D1	50 / 75 mm	90 / 95 / 110 / 125 / 160 mm
D2	300 mm	380 mm
l	320 mm <sup>1</sup>	320 mm <sup>1</sup>
t	3,5 mm	3,5 mm

<sup>1</sup>Special lengths available on request / <sup>2</sup>Alternatively available in PE (roof membranes based on PE) / <sup>3</sup>Other diameter sizes available on request /

<sup>4</sup>Alternatively also available with accumulation ring

KALA – KUNSTSTOFFE | Karl-Heinz Lange GmbH+Co.KG reserves the right to make technical changes.