

Scupper, round

Attention: The processing instructions of the roofing membrane manufacturer must be adhered to;

Materials and used material compounds may be subject to change.

Function:

Molded part for horizontal drainage through the parapet. Installation with connection to a piping system for water discharge or free outflow. When used for emergency drainage, the exact installation point must be determined based on the water level.

Material:

Variants in PVC, FPO/PP², and BIT for connection to the corresponding compatible material type of the roof membrane. The materials are weather-resistant and modified: UV-stabilized, resistant to thermal degradation and oxidative aging, as well as impact-resistant in cold temperatures.

Available sizes:

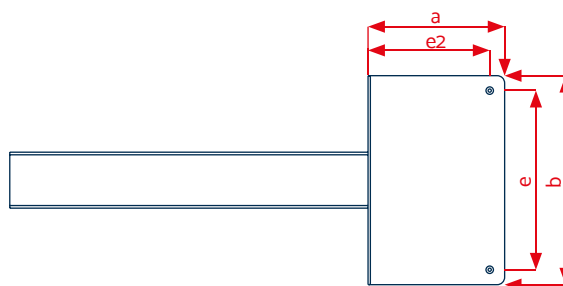
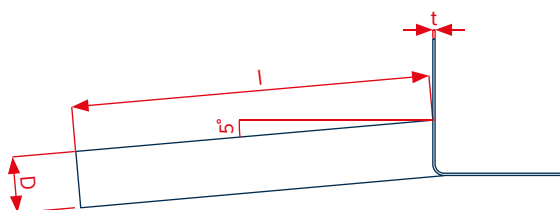
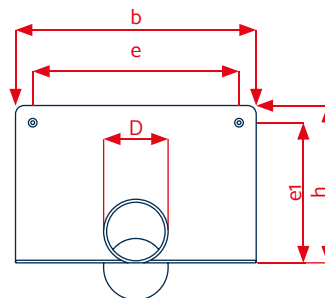
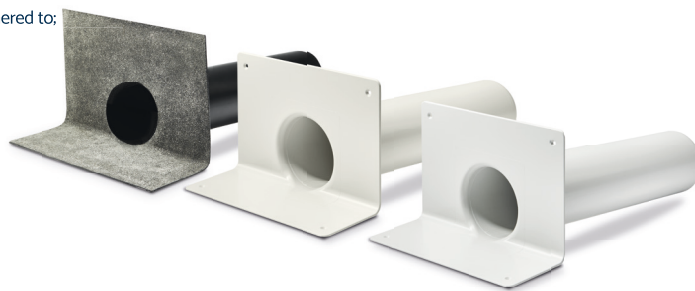
- D 50 mm (DN 50)
- D 63 mm
- D 75 mm (DN 70)
- D 90 mm
- D 110 mm (DN 100)
- D 125 mm (DN 125)³

Package units:

Supplied in cartons, PU 1 unit

Accessories⁴:

- Gravel basket
- Vapour barrier sheet



Drainage performance:

LGA-certified characteristics

Diameter	Accumulation height	
	35 mm	65 mm
D 50 mm (DN 50)	0.51 litre/sec.	1.31 litre/sec.
D 63 mm	N/A	N/A
D 75 mm (DN 70)	0.65 litre/sec.	1.65 litre/sec.
D 90 mm	0.65 litre/sec.	1.90 litre/sec.
D 110 mm (DN 100)	1.00 litre/sec.	2.65 litre/sec.
D 125 mm (DN 125) ³	1.00 litre/sec.	2.80 litre/sec.

Technical data	
D	50 / 63 / 75 / 90 / 110 / 125 mm ³
l	480 mm ¹
a	112 mm
b	280 mm
h	186 mm
e	240 mm
e1	166 mm
e2	92 mm
t	3 mm
Pipe inclination 5°	

¹ Special lengths available on request / ² Alternatively available in PE (roof membranes based on PE) / ³ **Attention:** Please note that the technical dimensions and visual representation may differ from the illustration / ⁴ Alternatively also available with accumulation ring
KALA - KUNSTSTOFFE | Karl-Heinz Lange GmbH+Co.KG reserves the right to make technical changes.