

Emergency overflow, round

Attention: The processing instructions of the roofing membrane manufacturer must be adhered to;
Materials and used material compounds may be subject to change.

Function:

Molded part for horizontal emergency drainage through the parapet.
Installation with connection to a piping system for water discharge or free outflow. When installing, the exact installation point must be determined based on the water level.

Material:

Variants in PVC, FPO/PP ², and BIT for connection to the corresponding compatible material type of the roof membrane. The materials are modified to be weather-resistant: UV-stabilized, resistant to thermal degradation and oxidative aging, as well as impact-resistant in cold temperatures.

Available sizes:

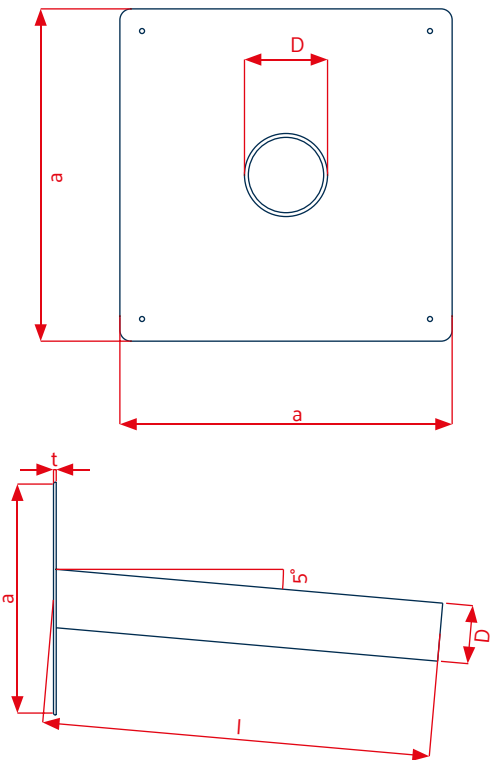
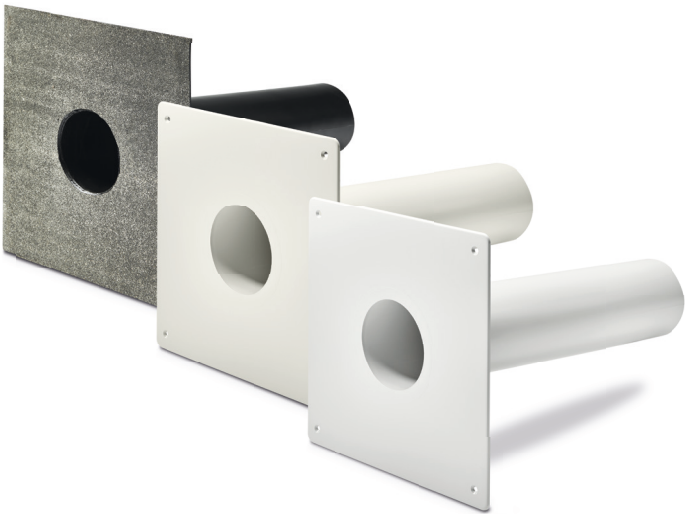
- D 50 mm (DN 50)
- D 63 mm
- D 75 mm (DN 70)
- D 110 mm (DN 100)
- D 125 mm (DN 125)

Package units:

Supplied in cartons, PU 1 unit

Accessories:

- Vapour barrier sheet



Drainage performance:

LGA-certified characteristics

Diameter	Accumulation height	
	35 mm	65 mm
D 50 mm (DN 50)	0.51 litre/sec.	1.31 litre/sec.
D 75 mm (DN 70)	0.65 litre/sec.	1.65 litre/sec.
D 110 mm (DN 100)	1.00 litre/sec.	2.65 litre/sec.
D 125 mm (DN 125)	1.00 litre/sec.	2.80 litre/sec.

Technical data	
D	50 / 63 / 75 / 110 / 125 mm
a	300 mm
l	490 mm ¹
t	3,0 mm
Pipe inclination 5°	

¹Special lengths available on request / ²Alternatively available in PE (roof membranes based on PE)
KALA - KUNSTSTOFFE I Karl-Heinz Lange GmbH+Co.KG reserves the right to make technical changes.