

Flat roof fans for cold roofs with weather cap

Attention: The processing instructions of the roofing membrane manufacturer must be adhered to; Materials and used material compounds may be subject to change.

Function:

- Ventilation and aeration of flat roof structures
- For moisture removal and drying of a saturated roof assembly

Installation:

Align the vent on the substrate and securely fasten it at four points in the substrate using the holes at the edge of the flange. Guide the membrane onto the flange and connect the membrane and flange with a weld seam width of at least 20 mm. For the BIT variant, properly integrate the factory-laminated bitumen connection into the multilayer waterproofing system.

Material:

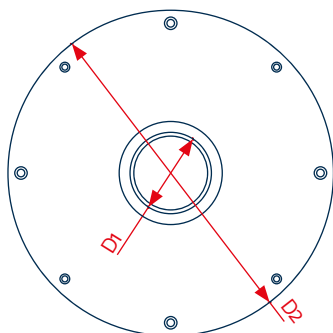
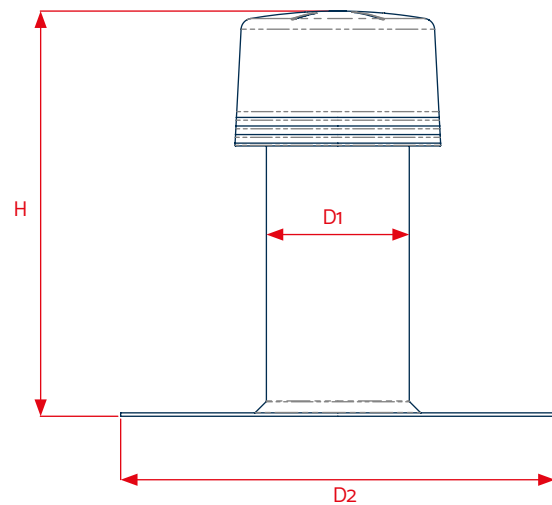
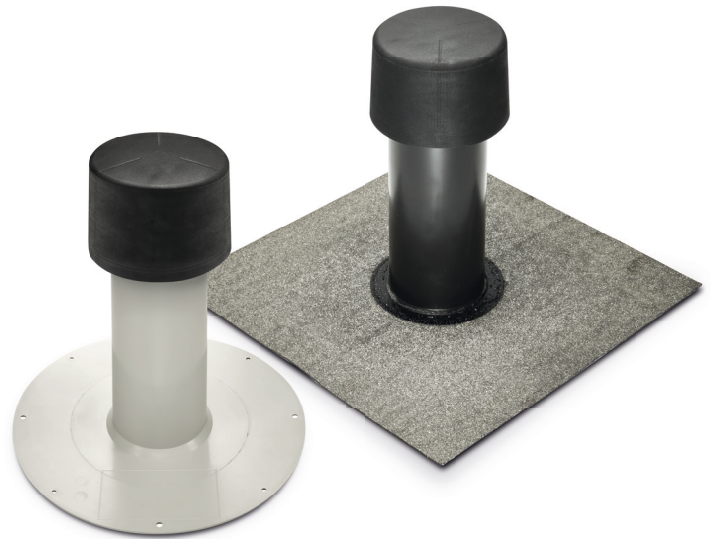
Variants in PVC, FPO/PP², and BIT for connection to the corresponding compatible material type of the roof membrane. The materials are modified to be weather-resistant: UV-stabilized, resistant to thermal degradation and oxidative aging, as well as impact-resistant in cold temperatures.

Available sizes¹:

- D 75 mm (DN 70)
- D 125 mm (DN 125)
- D 110 mm (DN 100)
- D 160 mm (DN 150)

Package units:

Supplied in cartons, PU 1 unit



Technical data	
H	354 mm ¹
D1	D 75 mm (DN 70) / D 110 mm (DN 100) / D 125 mm (DN 125) / D 160 mm (DN 150)
D2	For size D 75 mm (DN 70) = 300 mm For all others = 380 mm

¹Special lengths available on request / ²Alternatively available in PE (roof membranes based on PE)
KALA - KUNSTSTOFFE | Karl-Heinz Lange GmbH+Co.KG reserves the right to make technical changes.