

# Flat roof refurbishment fans with forced ventilation

**Attention:** The processing instructions of the roofing membrane manufacturer must be adhered to; Materials and used material compounds may be subject to change.

## Function:

- Moisture removal, forced ventilation of roof structures
- For a drenched roof package for moisture removal and drying out

In this variant, a maintenance-free suction fan that is driven by the wind (achieves a very high air flow rate) is attached to the base body. The fan is resistant to driving rain and snow and is supplied completely ready for installation and can be welded directly to the roof membrane.

## Installation:

Align the fan on the underlay and secure it in position at four points on the underlay using the holes drilled into the edge of the tray. Place the membrane on the tray and join the membrane and the tray with a weld seam at least 20 mm wide. For the BIT option, incorporate the factory-laminated bitumen connection into the multi-layer waterproofing composite in a workmanlike manner.

## Material:

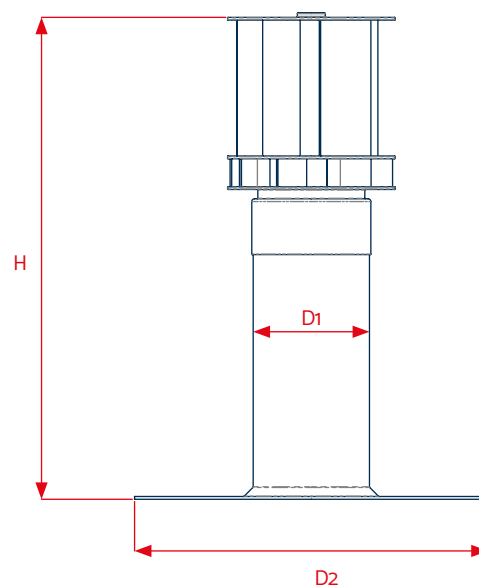
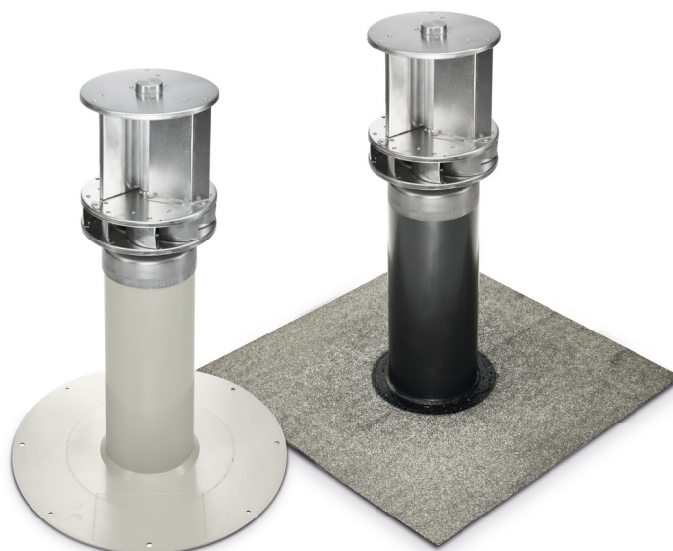
Our fans are available in PVC, FPO/PP<sup>2</sup> and BIT for connection to the matching material used for the roof membrane. The materials are modified to be weather-resistant: UV-stabilised, against heat degradation and oxidative ageing as well as resistant to cold impact. The suction fan attachment is made of high-quality aluminium.

## Available sizes<sup>1</sup>:

- D 125 mm (DN 125)
- D 160 mm (DN 150)

## Package units:

Supplied in cartons, PU 1 unit



Technical data	
H	518 mm <sup>1</sup>
D1	D 125 mm (DN 125) / D 160 mm (DN 150)
D2	380 mm

<sup>1</sup>Special lengths available on request / <sup>2</sup>Alternatively available in PE (roof membranes based on PE)  
KALA – KUNSTSTOFFE | Karl-Heinz Lange GmbH+Co.KG reserves the right to make technical changes.