

Gravel guard frame

Function:

The gravel guard frame reliably retains coarse dirt for gravel and other loads, preventing it from accumulating at the drain. Even with significant dirt accumulation, the gravel guard frame ensures the functionality of the drain.

Installation:

The gravel guard frame is placed centrally on the drainage point above the drain. The drain grate is then inserted into the opening and clamped into place. The gravel is then pushed against the gravel guard frame on all sides to fix it in position.

Material:

PVC Light grey, low-temperature impact resistant plastic, weatherproof

Delivery unit:

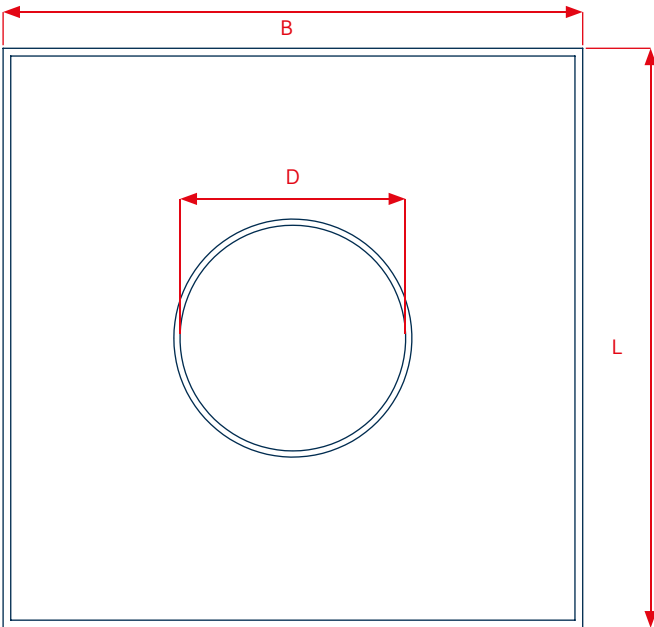
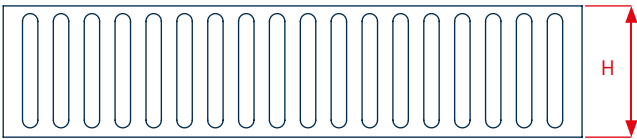
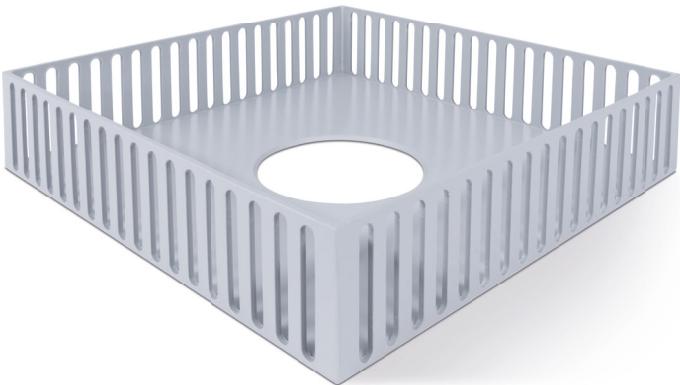
Gravel frame, welded construction, ready for installation, without gravel basket.

Versions:

Universal size; different dimensions available on request

Package units:

Supplied in cartons, PU 1 unit



Technical data	
L	380 mm
B	380 mm
H	84 mm
D	130 mm