

Height-adjustable terrace support system

Function:

Terrace support for the installation of all surface types, particularly stone slabs and boardwalk finishes. The height adjustment and optional equalizing elements permit easy levelling of surfaces and slopes. In combination with the pressure disc, which is available as an accessory, the KALA support forms a sliding support system for direct installation on seals.

Additional protective mats must be fitted in areas frequented by the public, such as entrances to public buildings, cafeterias, etc.

Versions:

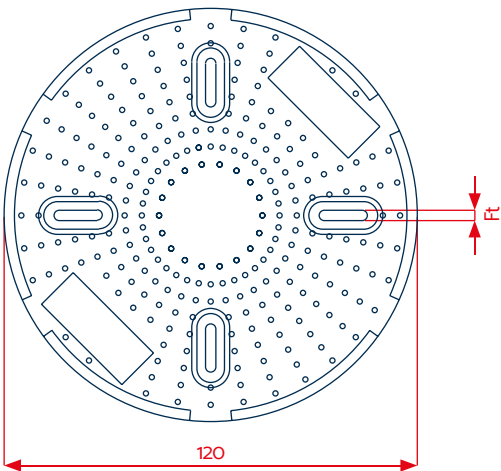
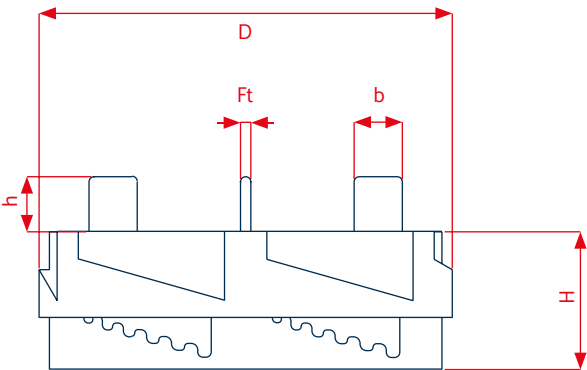
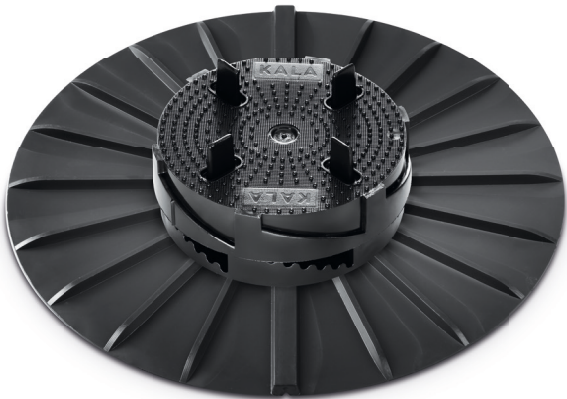
- Joint dividers for joint widths of 3 mm ^{1,2}, alternatively available in different joint widths
- Joint dividers separable for installation in a pattern or at the edge
- KALA Wood: Surface without joint divider for installation under wooden structures

Package units:

Supplied in cartons, PU 50 units

Accessories:

- ProSilent equaliser disc
- Pressure disc



| Technical data | | |
|----------------|-----------------------|-----------------------|
| | H1 | H2 |
| D | 120 mm | 120 mm |
| Ft | 3, alternatively 4 mm | 3, alternatively 4 mm |
| H | 28 - 42 mm | 40 - 70 mm |
| h | 16 mm | 16 mm |
| b | 14 mm | 14 mm |

¹ Alternatively available in a joint width of 4 mm / ² Alternatively available without joint divider
KALA - KUNSTSTOFFE | Karl-Heinz Lange GmbH+Co.KG reserves the right to make technical changes